

Transitory Locations

1. WHEN will my facility be counted?

Transitory Locations Operation Schedule

Feb | Mar | Apr | May | June

Participate in TLAC: Feb. 24, 2020 to March 21, 2020

Census Day: April 1, 2020

Participate in ETL: April 9, 2020 to May 4, 2020

— Expect a call/visit from Census staff to determine an enumeration method and any unique needs of your Transitory Location.

2/24/2020 – 3/21/2020

— Census Day – Kicks-off the national campaign to ensure everyone is counted only once and in the right place.

4/1/2020

— You can expect your Transitory Location to be enumerated during this time frame.

4/9/2020 – 5/4/2020

2. HOW will my facility be counted? *

In-Person Interview is the only method of enumeration available to Transitory Locations.

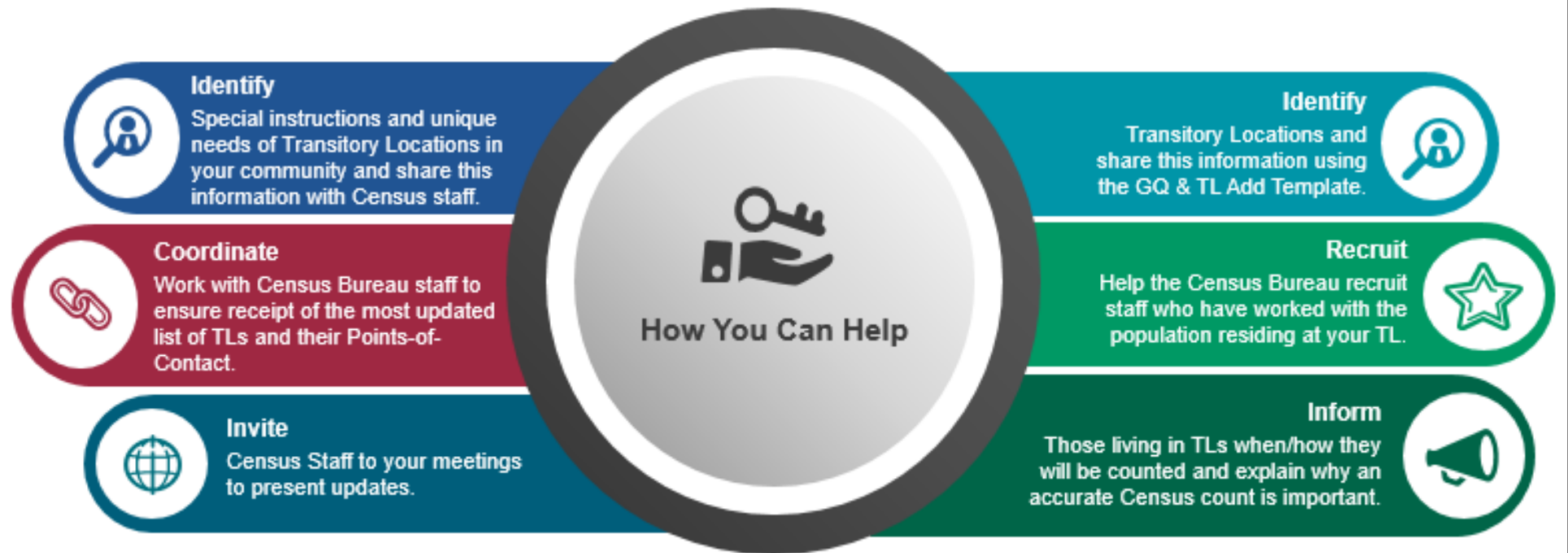
***NOTE:** Examples of Transitory Locations include, but are not limited to: Campgrounds, Recreational Vehicle (RV) Parks, Marinas, Hotels/Motels, Racetracks, & Circus/Carnivals.

Shape
your future
START HERE >

United States[®]
Census
2020

Transitory Locations

3. WHAT can I do to help?



4. WHO can I contact?

Please submit questions and requests for the GQ & TL Add Template to:

Adley Kloth, Area Manager

LA RCC GQ ETL OPS

Email: larccgqetlops@uscensus.onmicrosoft.com

Shape
your future
START HERE >

United States[®]
Census
2020